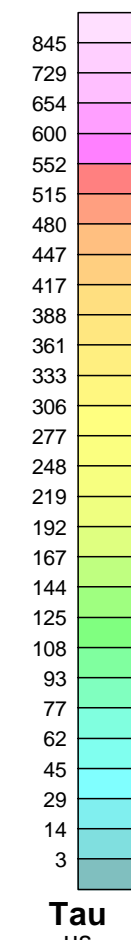
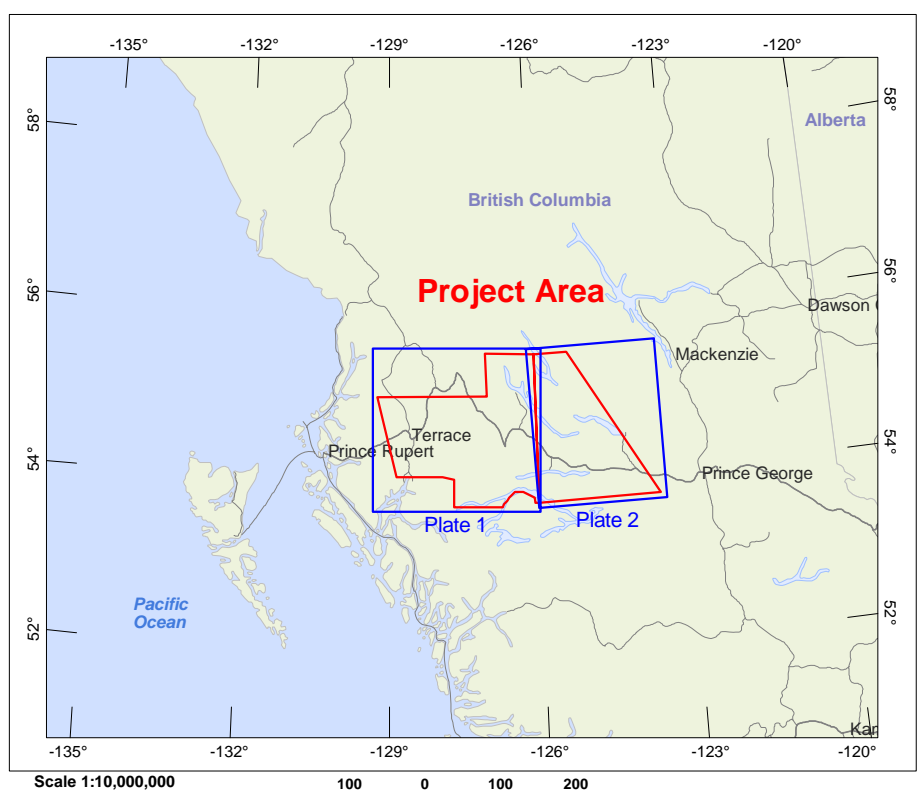
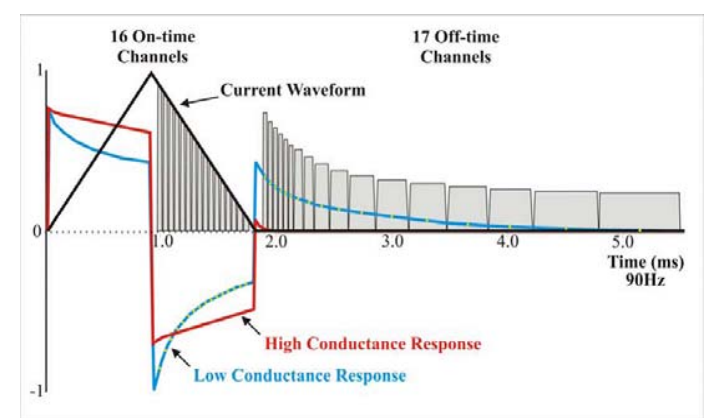
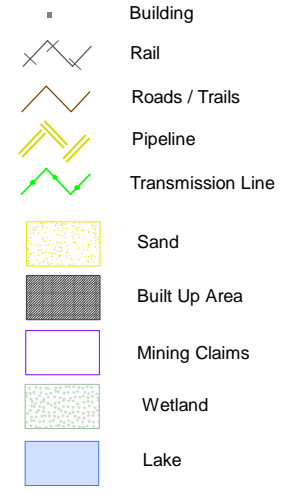


The topographic data base was derived from 1:50000 NRC (Natural Resources Canada) NTDB data  
Top contours derived from NASA SRTM (Shuttle Radar Topography Mission) data  
Inset data derived from Natural Resources Canada Atlas of Canada Base Maps

This map accompanies the technical report entitled 'Report on a Helicopter-Borne Magnetic and Electromagnetic Survey, Quest West', by Aerquest Surveys, January 2009



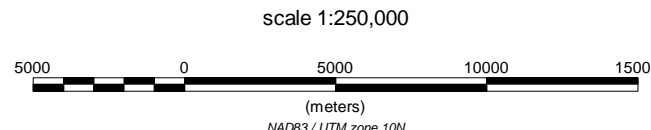
Late Time Tau Interval  
10µs  
250µs  
1000µs



Schematic of Transmitter and Receiver waveforms



**SURVEY SPECIFICATIONS:**  
Survey from: August 24 - October 10, 2008  
Traverse line spacing: 4000 metres  
Traverse line direction: 90°/270°  
Nominal EM bird height: 30 metres  
Aircraft: Aerquest A-Star 350B2 (C-GVIA)  
**INSTRUMENTATION:**  
Data acquisition: ADAS & RMS DGR-33  
Magnetometer: Geometrics G-623A caesium vapour  
Installation: Towed bird 31 m above EM bird  
Sensitivity: .001 nanoTesla  
Electromagnetics: AeroTEM III System (November)  
Configuration: Towed bird  
**NAVIGATION:**  
Navigation: Differential Global Positioning System (DGPS)  
Navigation equipment: AGNAV with MID-TECH RX400p receiver  
Radio Altimeter: Terra TRA3000TRI-30  
**POSITIONING:**  
Datum: NAD83  
Major Axis: 6378137.000  
Eccentricity: 0.081819191  
**MAP PROJECTION:**  
Projection: Universal Transverse Mercator  
Central Meridian: 123°W (Zone 10)  
Central Scale Factor: 0.9996  
False Easting/Northing: 500,000m



Geoscience BC  
British Columbia

**LATE TIME TAU**  
Quest West, Plate 2, Blocks D & E



7687 Bath Road, Mississauga, ON, Canada, L4T 3T1  
Tel: (905) 672-6129 Fax: (905) 672-7063  
www.aerquest.ca

January 2009

TAU Plate 2