

# IOE Dunedin

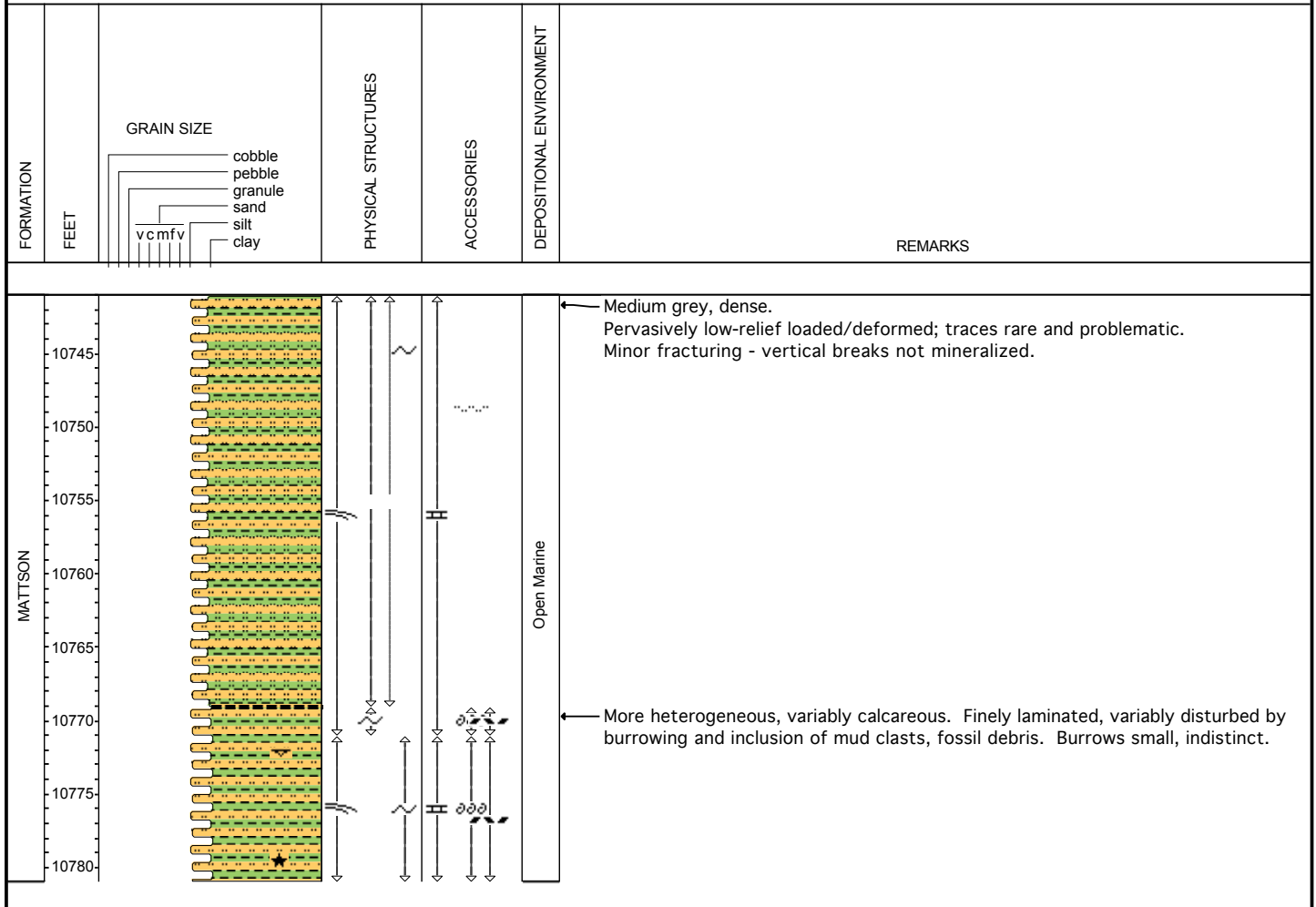
D-75-E 94-N-8

Logged by: PETREL ROBERTSON CONSULTING LTD.

Remarks: Core #10: 10741-10781' (Rec. 40')

4" core, clean, unslabbed

(All cores) - Marine, distal, some aerobic shelf/shoreface with possible Glossifungites surfaces. Very little coarse clastic influx. Mud clasts - possible storm events?

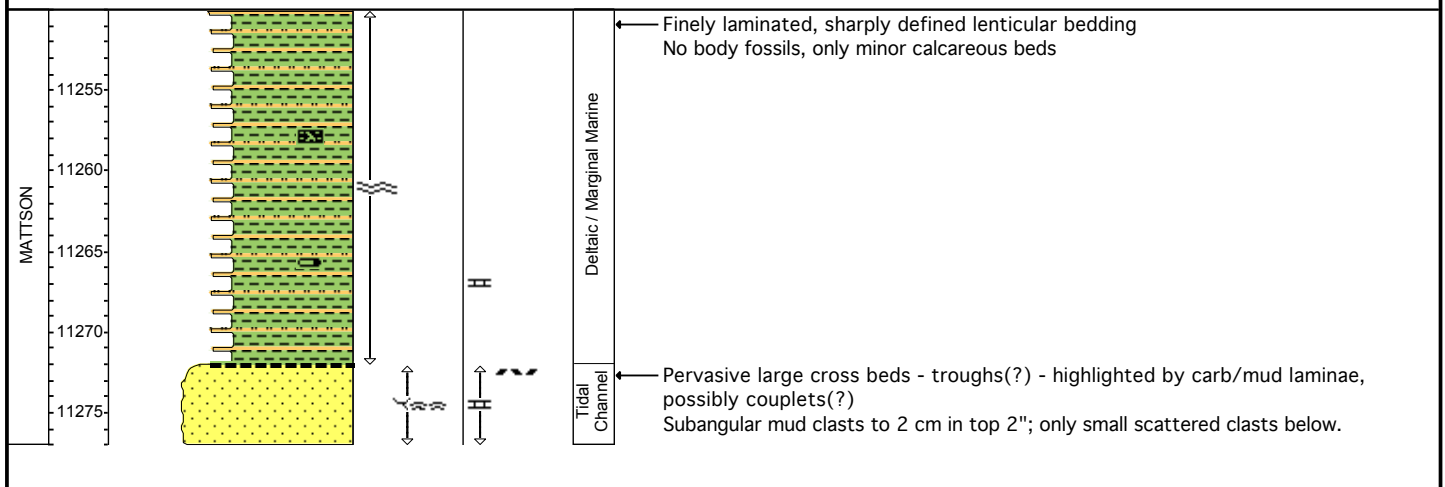




**D-75-E 94-N-8**

Remarks: Core #12: 11250-11287' (Rec. 27')

(All cores) Marine, distal, some shelf/shoreface with possible *Glossifungites* surfaces. Very little coarse clastic influx. Possible tidal channel component of shoreface system? at one spot. Mud clasts - possible storm events?

[illegible]

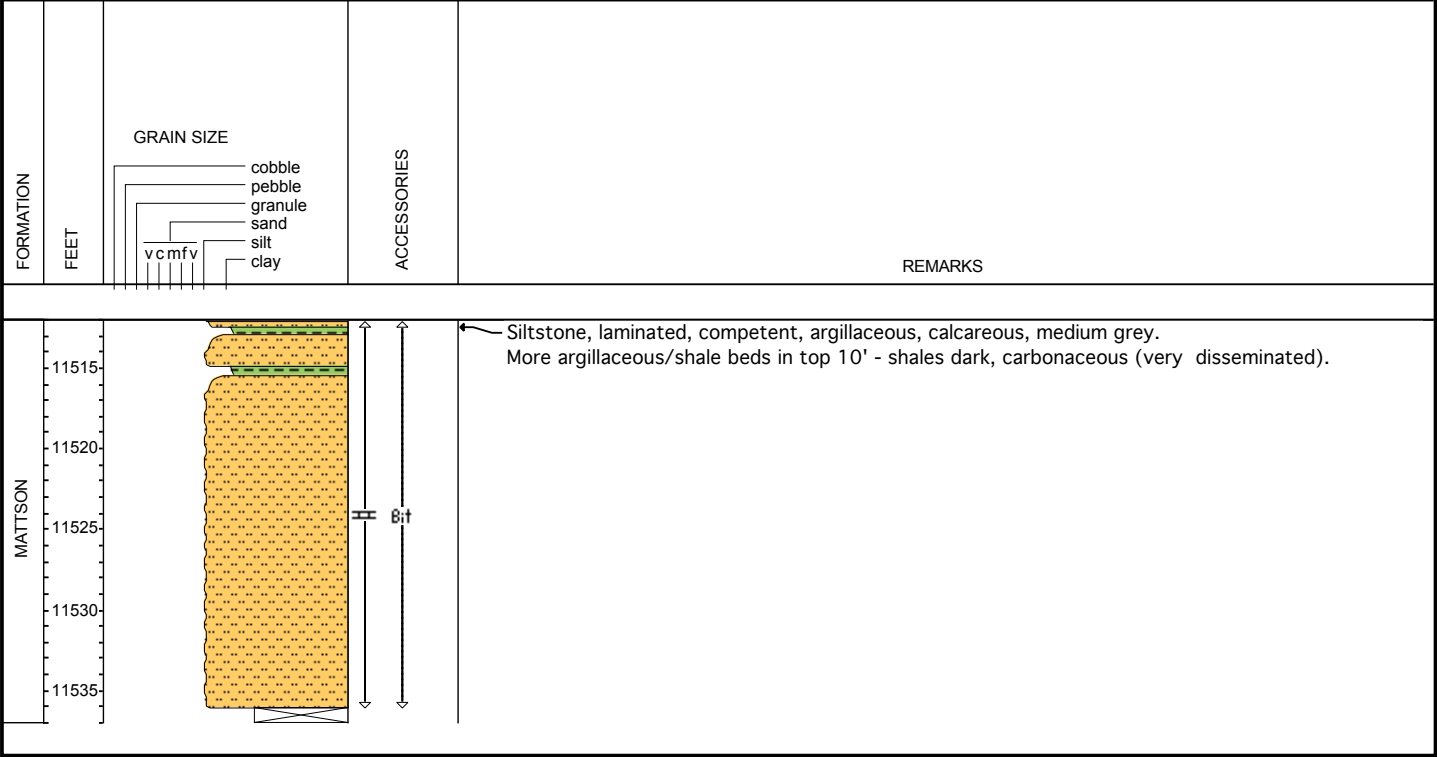


IOE Dunedin  
D-75-E 94-N-8

Logged by: PETREL ROBERTSON CONSULTING LTD.  
Remarks: Core #13: 11512-11537' (Rec. 24')

4" core, clean, unslabbed

(All cores) Marine, distal, some shelf/shoreface with possible Glossifungites surfaces. Very little coarse clastic influx. Mud clasts - possible storm events?



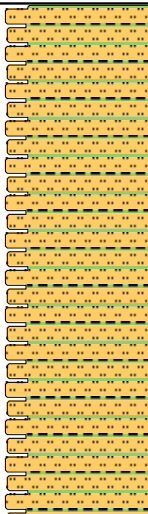


**D-75-E 94-N-8**

Not logged in detail.

4" core, clean, unslabbed - but low lithic contrast.

Marine sequence - lot distal, some aerobic shelf/shoreface with possible *Glossifungites* surfaces. Very little coarse clastic influx - possible tidal channel component of shoreface system? at one spot (core 12). Mud clasts - possible storm events?

FORMATION	FEET	<div>GRAIN SIZE</div> <div><div><div></div><div></div><div></div><div></div><div></div><div></div></div><div>cobble</div><div>pebble</div><div>granule</div><div>sand</div><div>silt</div><div>clay</div></div>	PHYSICAL STRUCTURES	ACCESSORIES	REMARKS
MATTSON	11776		H		Siltstone and shale, as above - dominantly silty, laminated, only slightly calcareous. Wavy bedded - no clear burrowing - but much broken up. Couple of subvert fractures with calcite fill.
	11778				
	11780				
	11782				
	11784				
	11786				
	11788				
	11790				
	11792				
	11794				
	11796				
	11798				
	11800				
	11802				
	11804				
11806					