

# BCGeoMap QUEST Area Update

## Bedrock Geology of Quesnel Terrane, Central British Columbia

**VISIT THE POSTER ROOM TO LEARN MORE ABOUT THIS PROJECT**

### Interim Geology Map

The British Columbia Geological Survey, Geoscience BC and the Geological Survey of Canada have collaborated to update the BCGeoMap (the Province's digital geology map) in central BC.

The BCGeoMap QUEST Area update corresponds to Geoscience BC's QUEST Project geophysical survey footprint, which extends from Williams Lake to Mackenzie (an area larger than Vancouver Island).

The update focuses on the volcanic and intrusive rocks of the Quesnel Terrane in central British Columbia. This terrane is prospective for copper and gold deposits but covered by glacial deposits in the center of the update area.

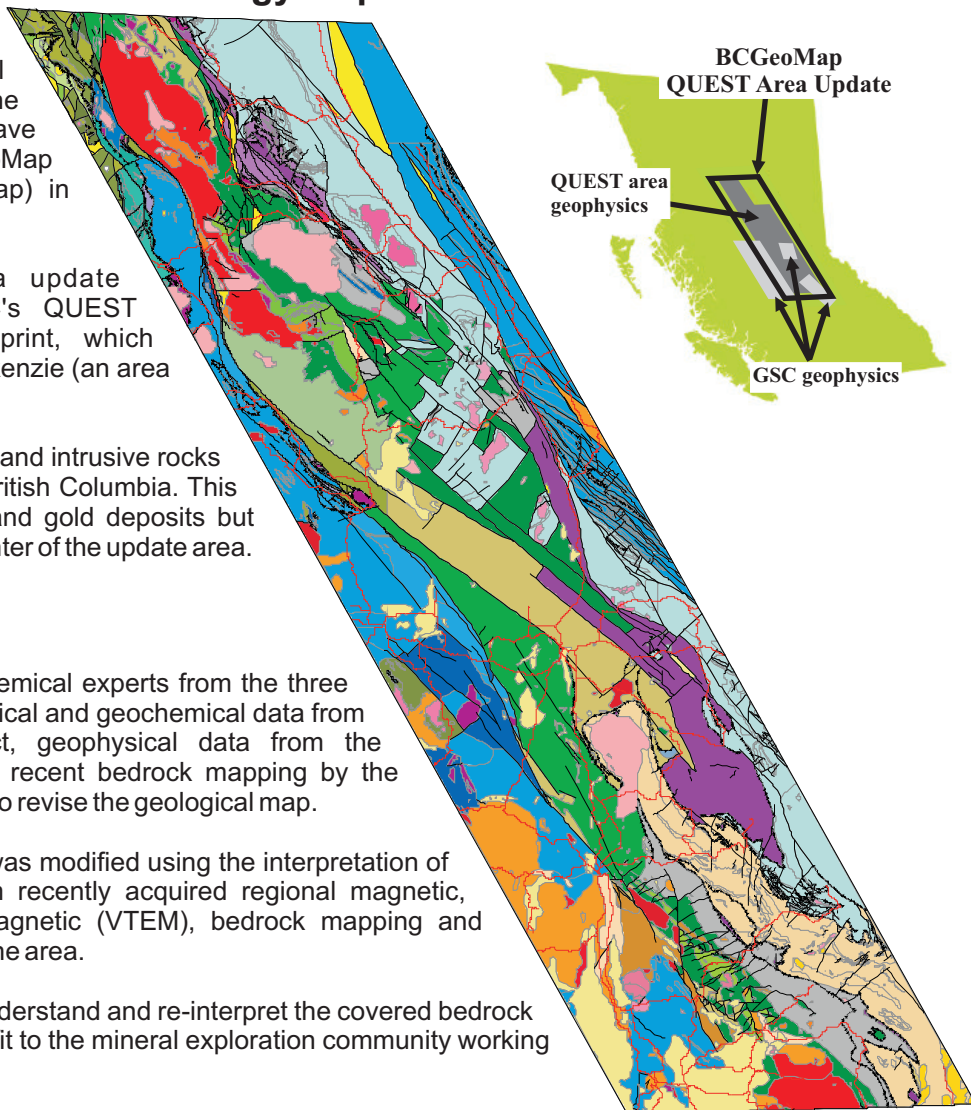
#### ABOUT THE UPDATE

Geological, geophysical and geochemical experts from the three organizations incorporated geophysical and geochemical data from Geoscience BC's QUEST Project, geophysical data from the Geological Survey of Canada and recent bedrock mapping by the British Columbia Geological Survey to revise the geological map.

This interim bedrock geology map was modified using the interpretation of the lithological characteristics from recently acquired regional magnetic, gravity, vertical transient electromagnetic (VTEM), bedrock mapping and Quaternary geochemistry maps for the area.

The new map will help geologists understand and re-interpret the covered bedrock geology, which will be of great benefit to the mineral exploration community working in the region.

The updated map will be freely available digitally through various sources, including MapPlace, when it is complete.



**Jim Logan**  
British Columbia Geological Survey  
[Jim.Logan@gov.bc.ca](mailto:Jim.Logan@gov.bc.ca)  
250 952-0436



**Bert Struik**  
Geological Survey of Canada  
[Bert.Struik@NRCan-RNCan.gc.ca](mailto:Bert.Struik@NRCan-RNCan.gc.ca)  
604 375-6413

